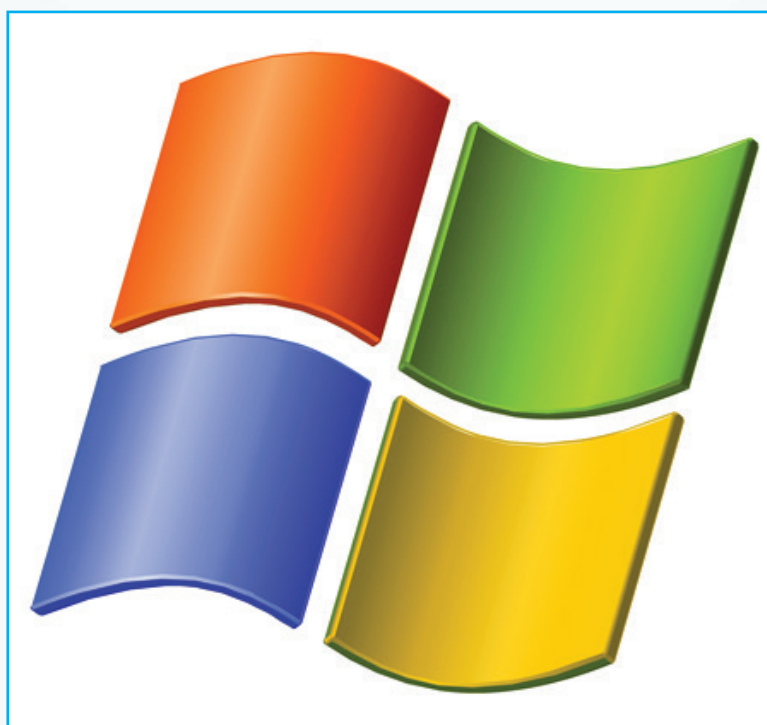


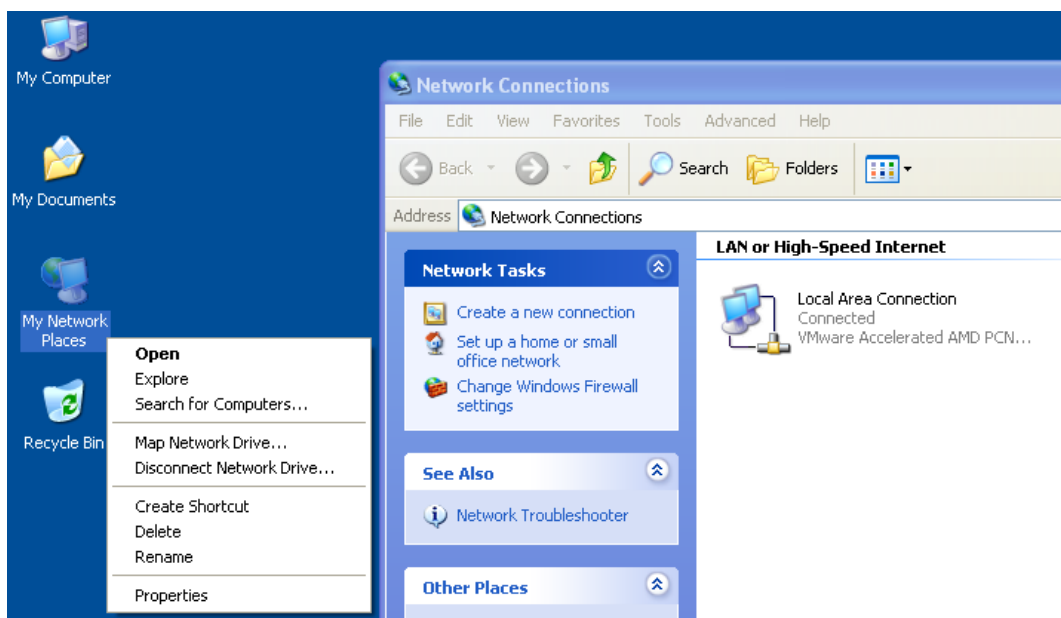
NetWorkx
TELECOMMUNICATIONS

РЪКОВОДСТВО
за инсталация на PPPoE връзка под
Windows® XP и Windows® 2003



Създаване на PPPoE връзка

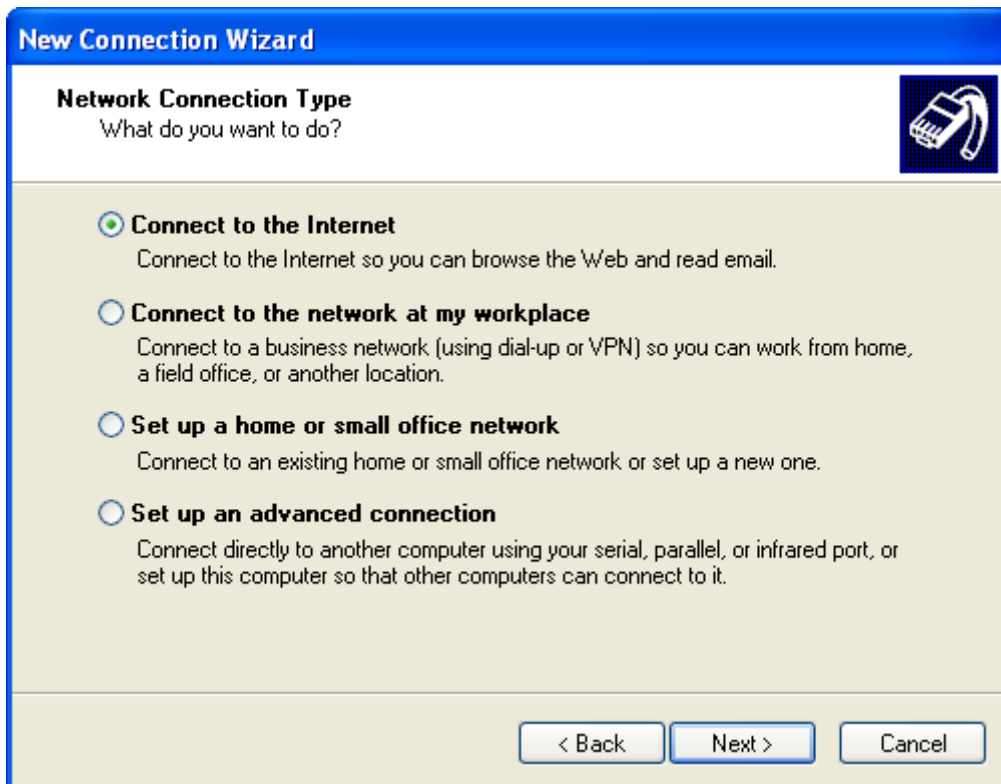
Стъпка 1: Щракнете с десния бутон на мишката върху иконата “My Network Places” и от менюто изберете “Properties”. Ще се отвори прозорецът “Network Connections”. От панела “Network Tasks” изберете “Create a new connection”.



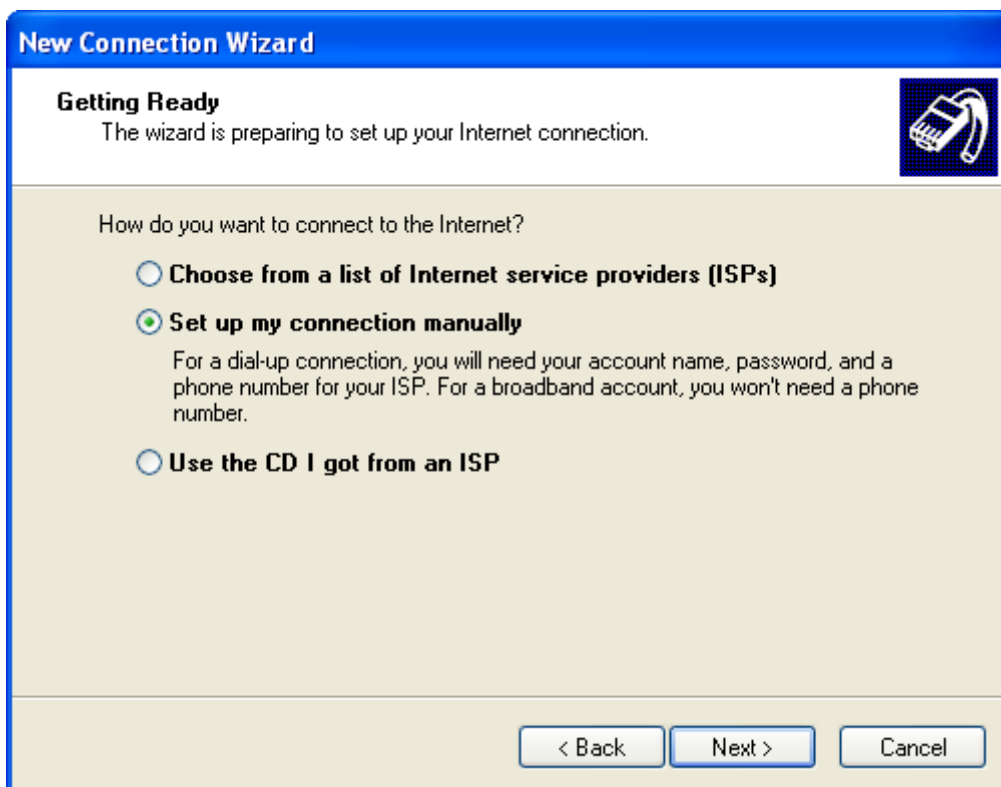
Стъпка 2: Ще се стартира съветника за създаване на нова връзка. Натиснете бутона “Next”.



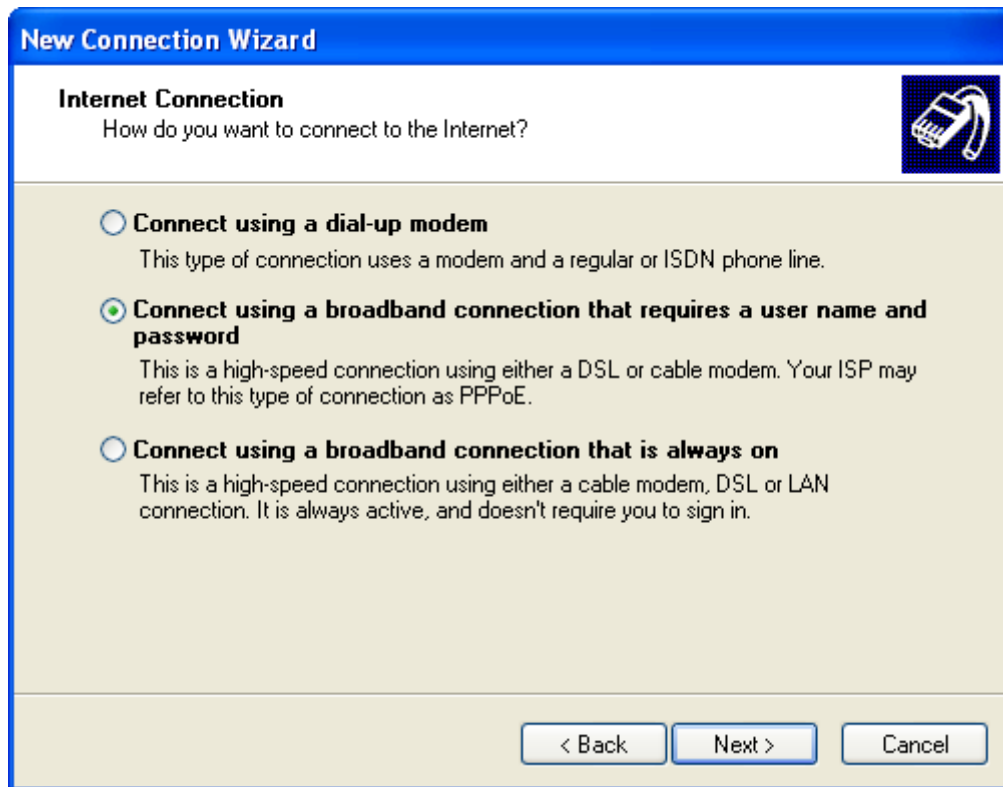
Стъпка 3: Изберете “Connect to the Internet” и натиснете бутона “Next”.



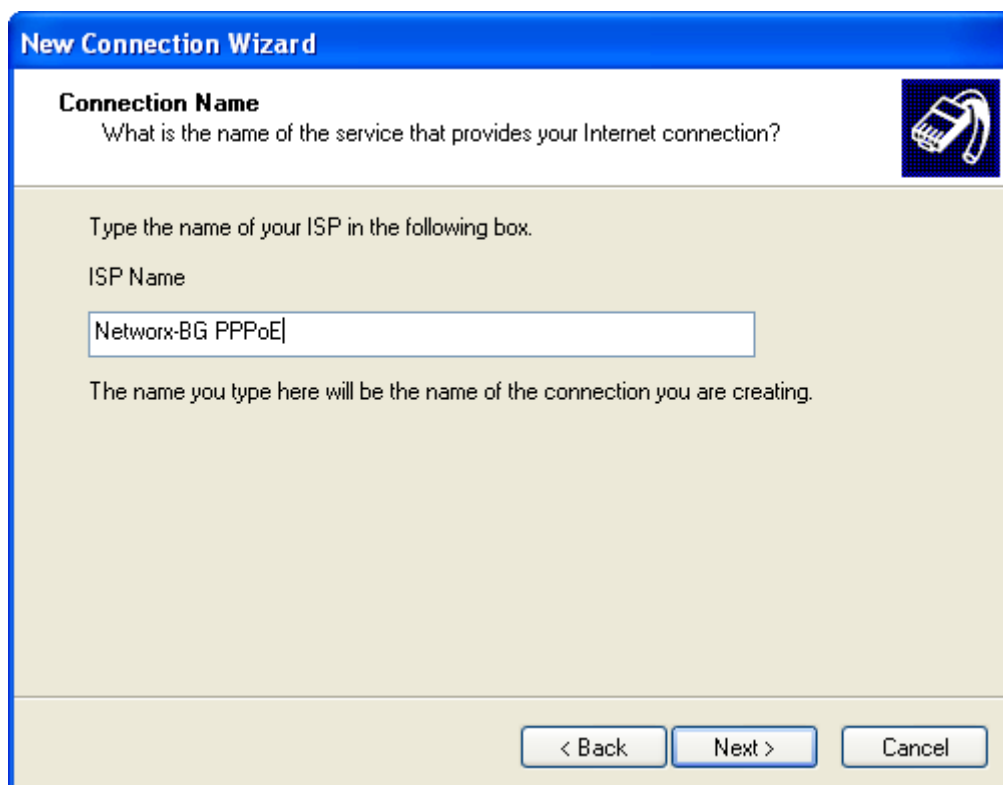
Стъпка 4: Изберете “Set up my connection manually” и натиснете бутона “Next”.




Стъпка 5: Изберете “Connect using a broadband connection that requires a user name and password” и натиснете бутона “Next”.



Стъпка 6: Въведете името на връзката, например “Networx-BG PPPoE” и натиснете бутона “Next”.



Стъпка 7: Въведете си потребителското име и двукратно паролата. Натиснете “Next”.



New Connection Wizard

Internet Account Information
You will need an account name and password to sign in to your Internet account.

Type an ISP account name and password, then write down this information and store it in a safe place. (If you have forgotten an existing account name or password, contact your ISP.)

User name:

Password:

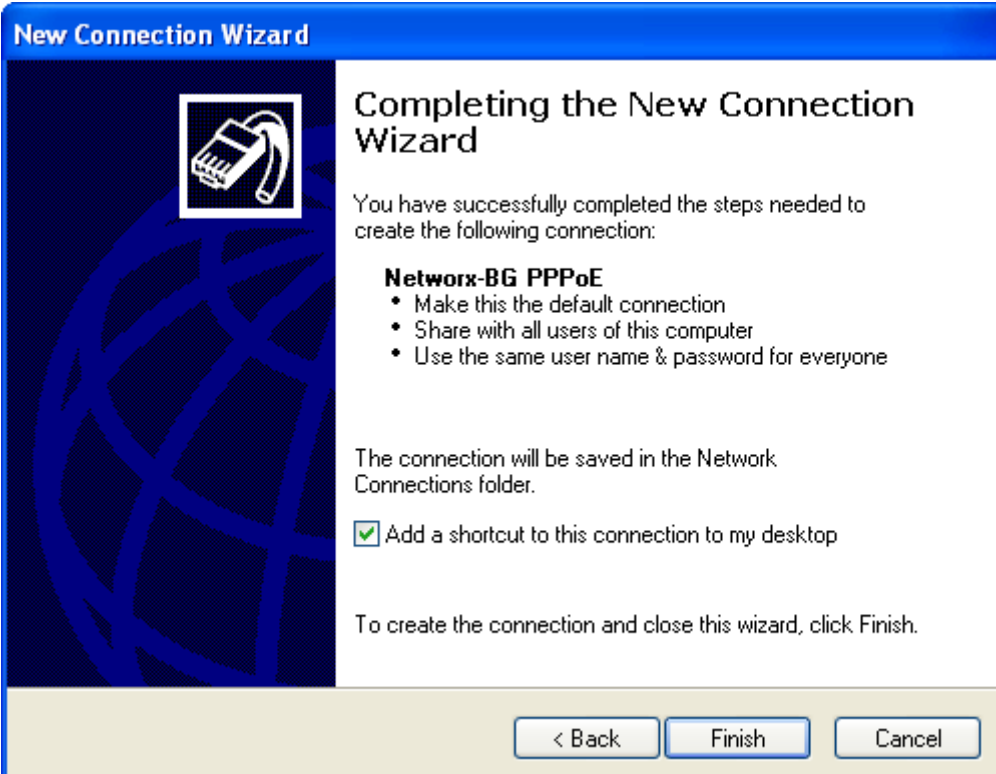
Confirm password:

Use this account name and password when anyone connects to the Internet from this computer

Make this the default Internet connection

< Back Next > Cancel

Стъпка 8: Сложете отметка пред “Add a shortcut to this connection to my desktop” и натиснете бутона “Finish”.



New Connection Wizard

Completing the New Connection Wizard

You have successfully completed the steps needed to create the following connection:

Networx-BG PPPoE

- Make this the default connection
- Share with all users of this computer
- Use the same user name & password for everyone

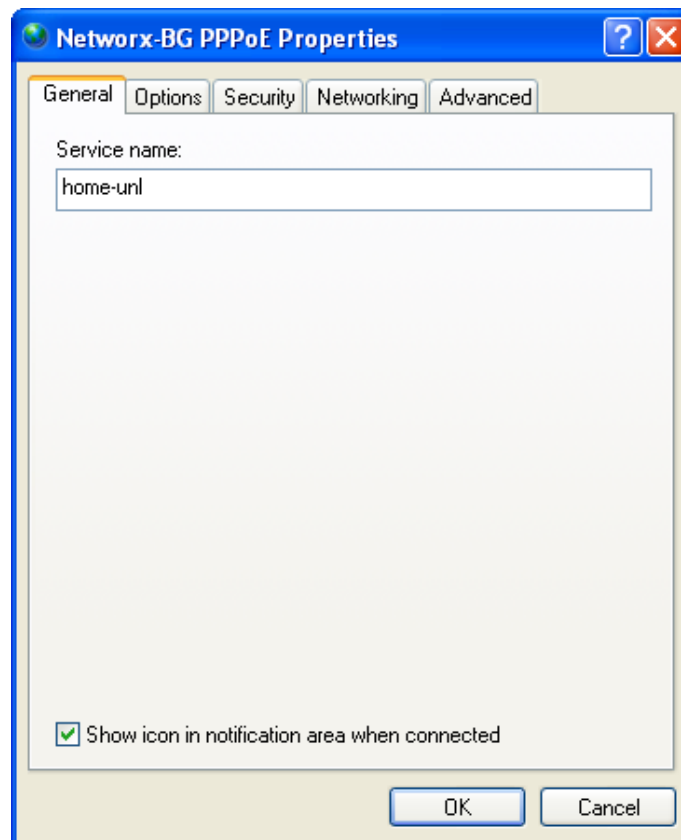
The connection will be saved in the Network Connections folder.

Add a shortcut to this connection to my desktop

To create the connection and close this wizard, click Finish.

< Back Finish Cancel

Стъпка 9: Ще се стартира вече създадената връзка. Натиснете бутона “Properties”. Въведете името на услугата, за неограничен достъп въведете “home-unl”, за трафик въведете “home-traf”, а за Profi-Max! – въведете “profi-max”. Накрая натиснете “OK”.



Стъпка 10: Натиснете бутона “Connect” за да се свържете към Интернет.

